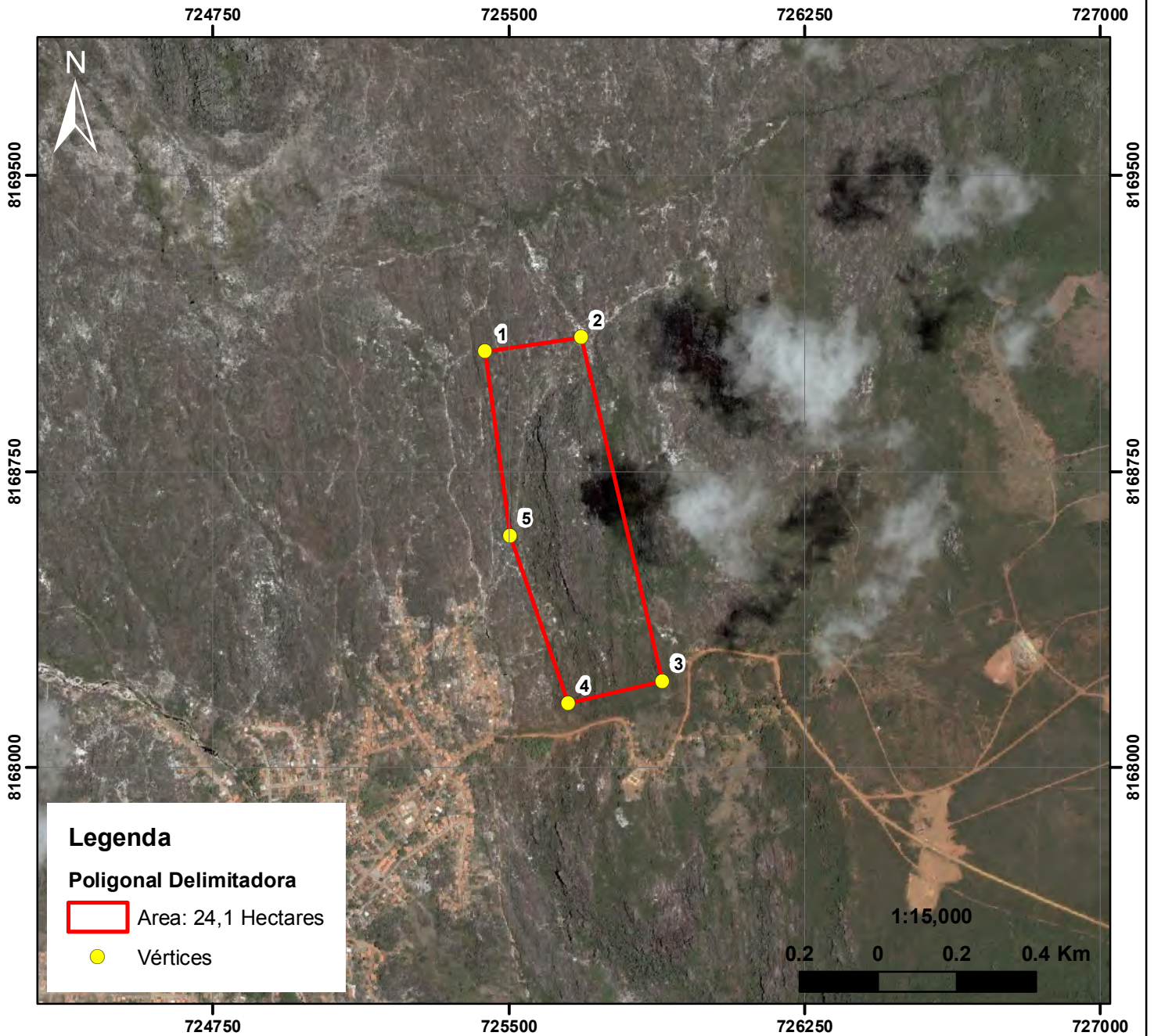
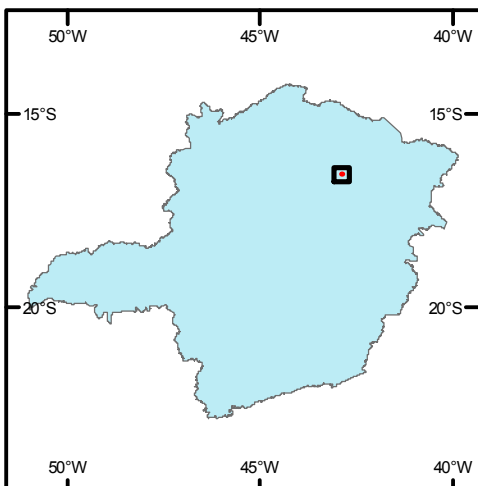


SIGEP 130
Morro da Pedra Rica, Grão Mogol, MG
Primeira Jazida de Diamantes Minerada em Rocha no Mundo



LOCALIZAÇÃO:



Vértice	Coordenadas Geográficas					
	Latitude			Longitude		
1	16°	32'	59.35" S	42°	53'	14.80" W
2	16°	32'	58.12" S	42°	53'	06.65" W
3	16°	33'	26.32" S	42°	52'	59.40" W
4	16°	33'	28.22" S	42°	53'	07.42" W
5	16°	33'	14.51" S	42°	53'	12.53" W

Responsáveis: Mario Luiz de Sá Carneiro Chaves
 Leila Benitez
 Kerley Wanderson Andrade